



Railway Pro Technology and Services Forum, Arad

**Infrastructure Development
Forum. DESTinationRAIL Project**

6 April 2017



EUROPEAN COMMISSION
Innovation and Networks Executive Agency
Director

DESTination RAIL
Decision Support Tool for Rail Infrastructure
EU Project No. 636285



Project Aim

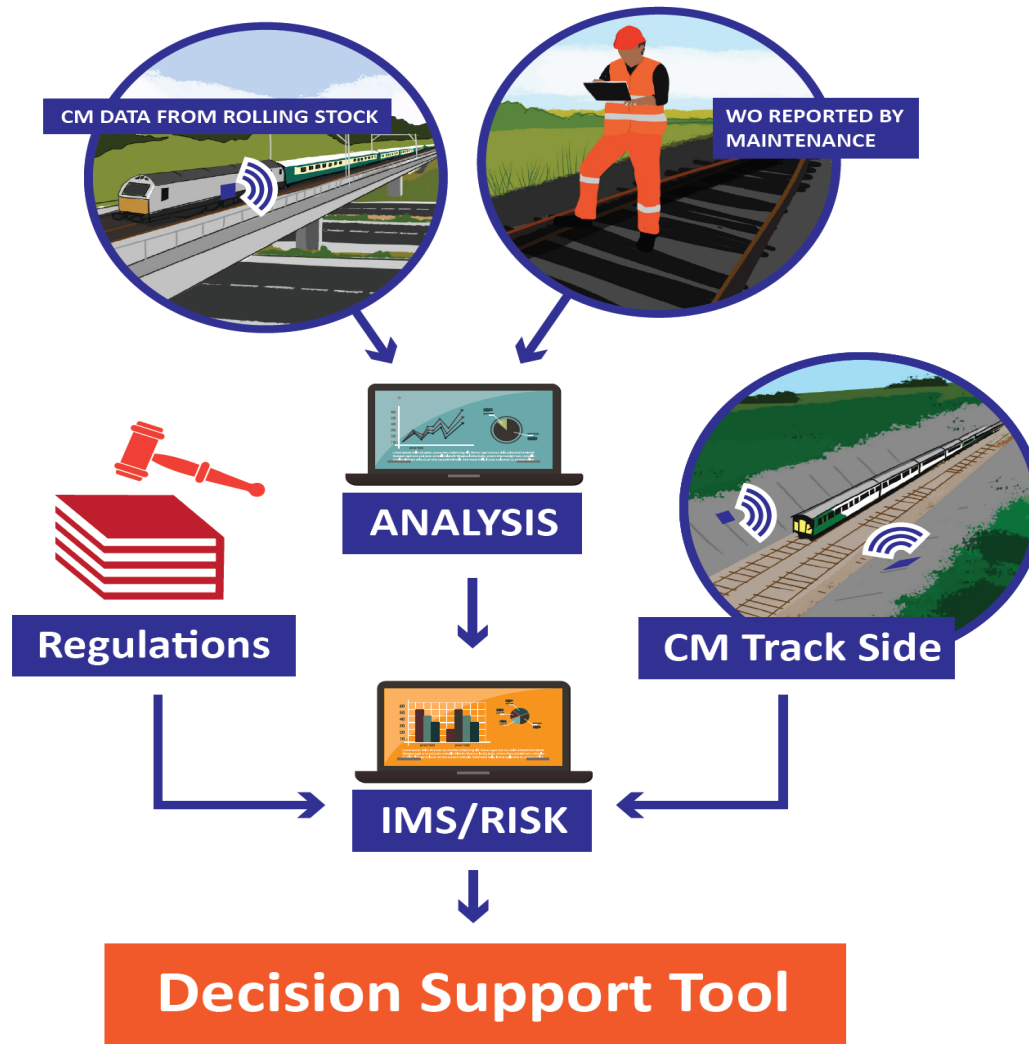


The aim of DESTINATION RAIL is to provide solutions for a number of problems faced by EU infrastructure managers.

Novel techniques for identifying, analysing and remediating critical rail infrastructure will be developed.

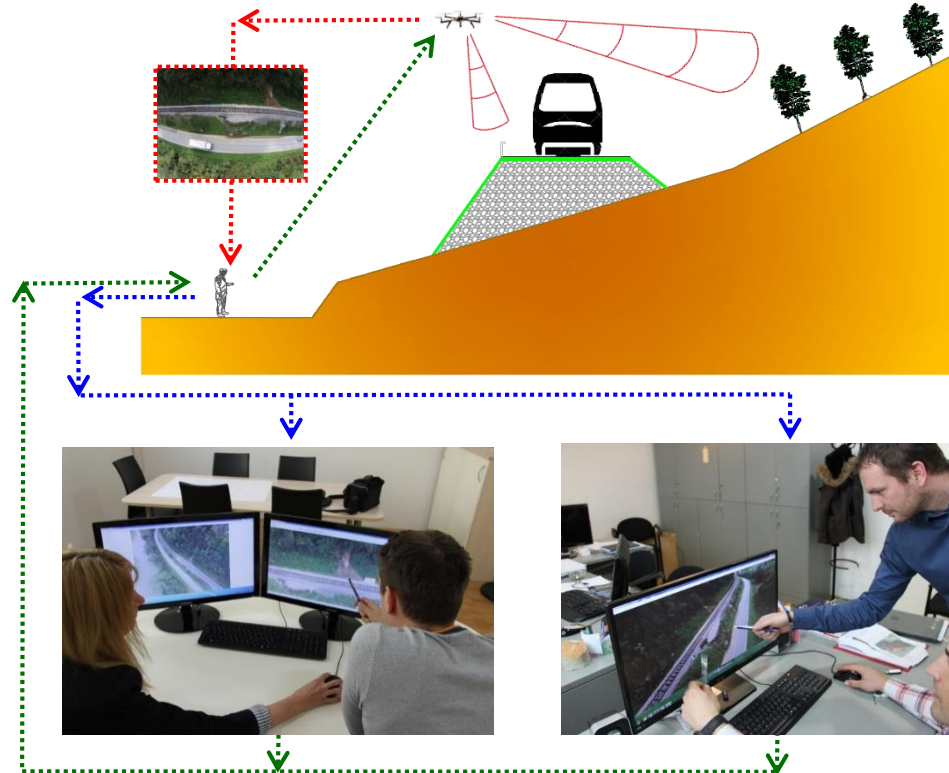


Objectives



These solutions will be implemented using a decision support tool, which allows rail infrastructure managers to make rational investment choices, based on reliable data

Use of Drones for monitoring slope stability



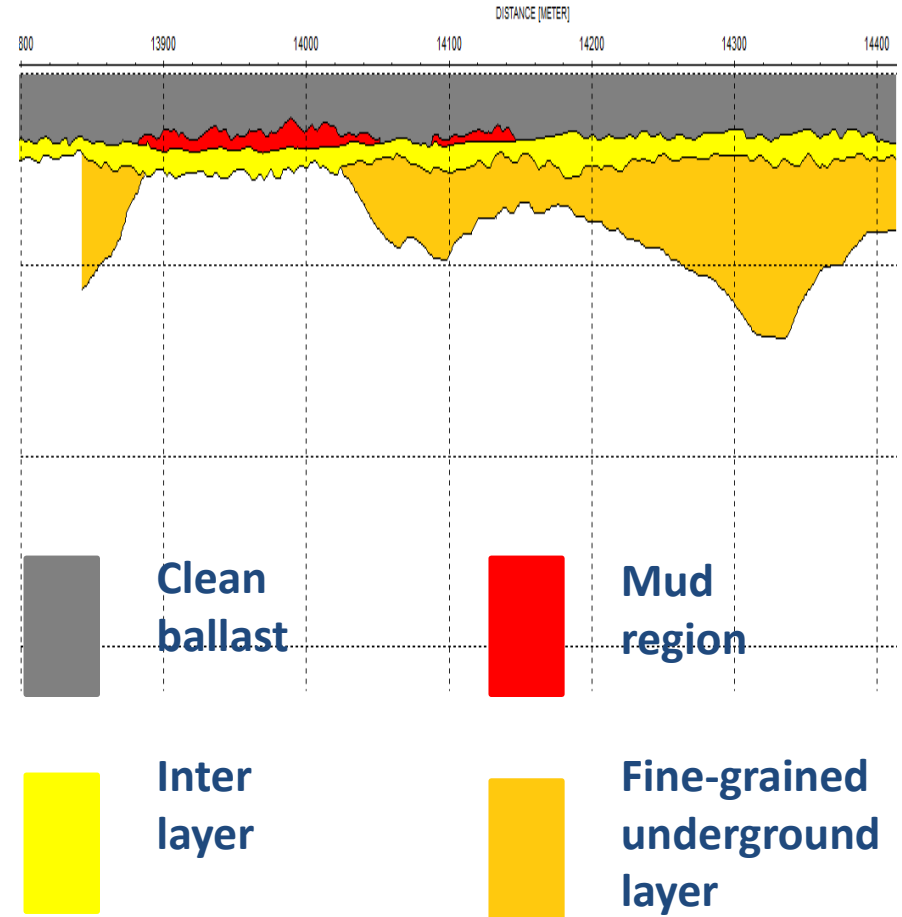
DESTINATION RAIL
Decision Support Tool for Rail Infrastructure
EU Project No. 636285



Monitoring of Track in Norway



Locating “Hot Spots” using GPR



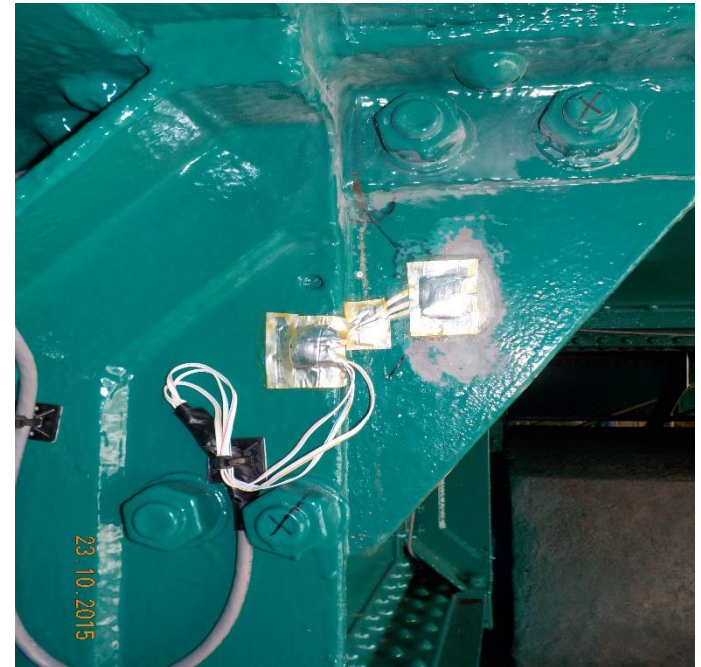
DESTINATION RAIL
Decision Support Tool for Rail Infrastructure
EU Project No. 636285



Collecting and Analysing Data



10204849 Photo: © Peter Barrow Photography 17th October 2009 Tel: 045-461070



DESTination RAIL
Decision Support Tool for Rail Infrastructure
EU Project No. 636285



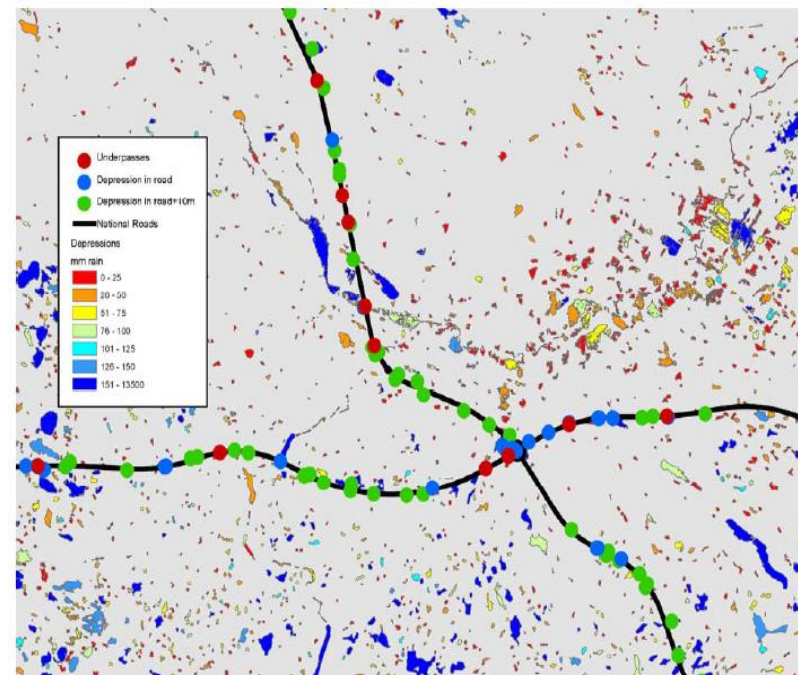
Decision Support Tool (DST)



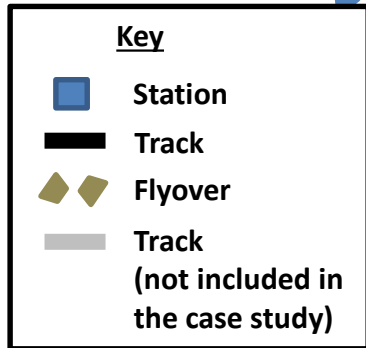
- Objective:
- to develop Decision Support Tool (DST) which will help infrastructure managers in decision making process in the context of dealing with a number of previously identified and ranked risks
- Visualization of risks
- Rank the options, development of different scenarios
- Development of maintenance plans

Table 4. Risk analyse matrix. The probability is in left column and the consequences are on the top row.

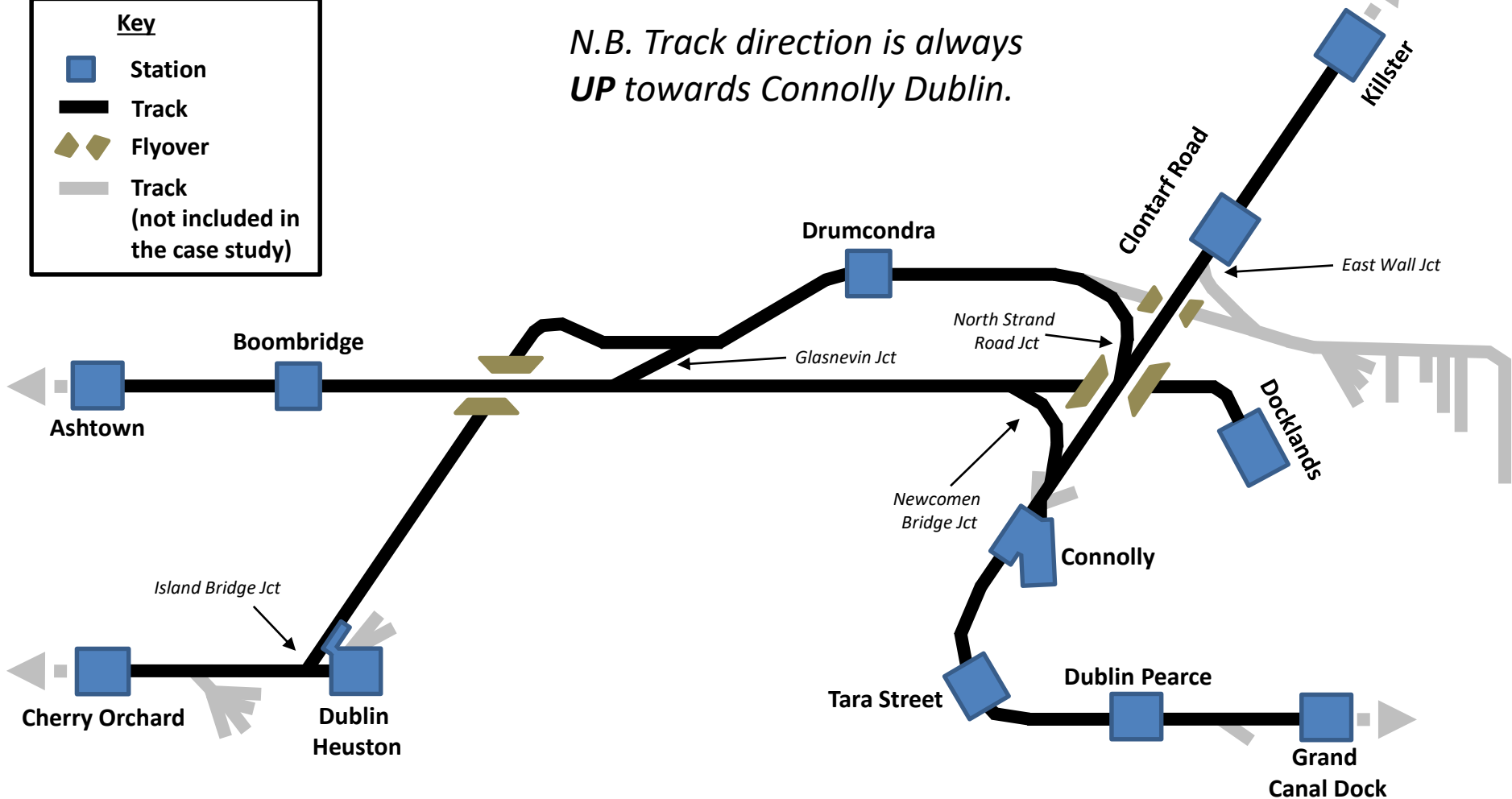
| | Insignificant | Minor | Medium | Major | Catastrophic |
|----------|---------------|-------|--------|-------|--------------|
| Certain | | | | | |
| Likely | | | | | |
| Possible | | | | | |
| Rare | | | | | |
| Unlikely | | | | | |



Network for Case Study



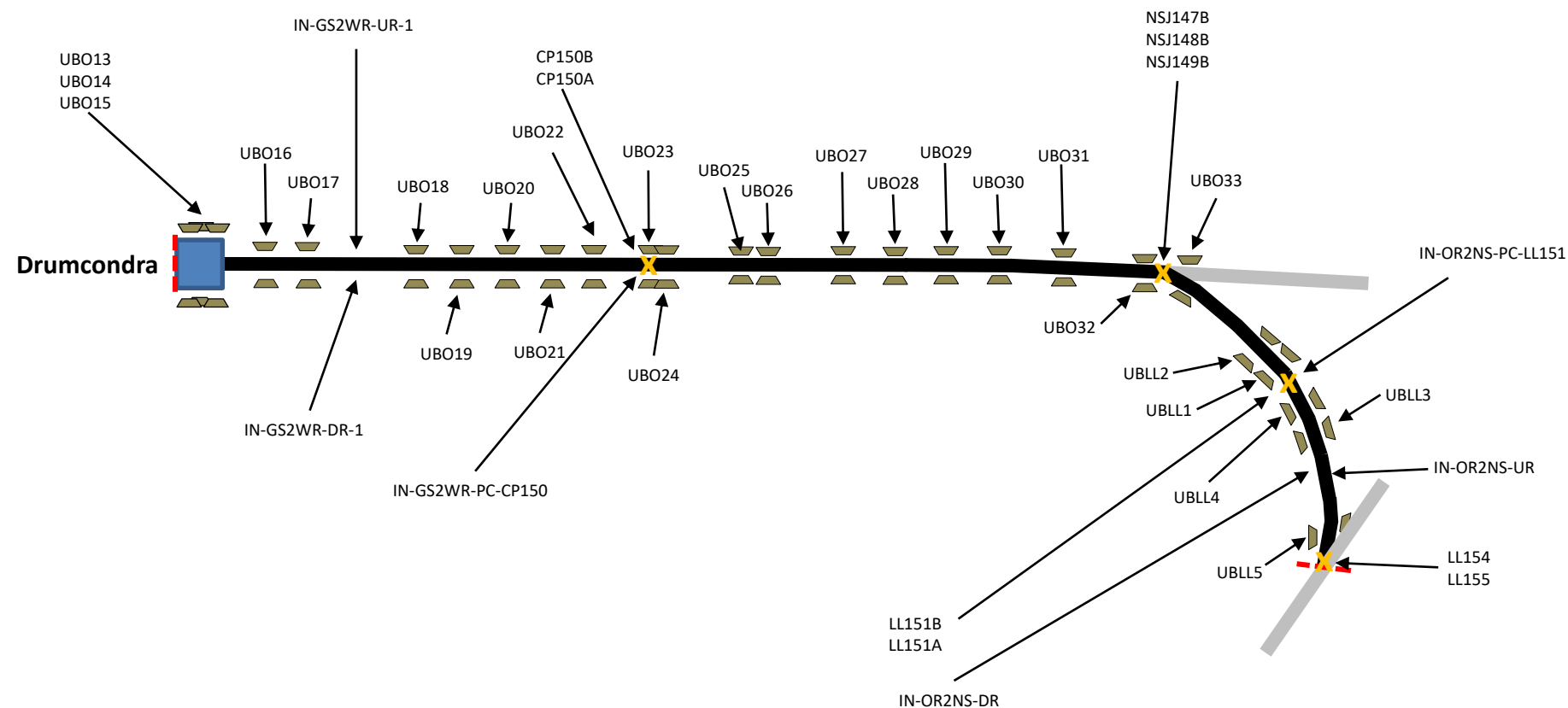
N.B. Track direction is always UP towards Connolly Dublin.



DESTination RAIL
Decision Support Tool for Rail Infrastructure
EU Project No. 636285



Drumcondra to North Strand Road Junction



DESTination RAIL
Decision Support Tool for Rail Infrastructure
EU Project No. 636285



EUROPEAN COMMISSION
Innovation and Networks Executive Agency
Director



New Technologies



DESTination RAIL
Decision Support Tool for Rail Infrastructure
EU Project No. 636285



Summary



- Project is producing practical ways of reducing costs for major infrastructure maintenance through Pilot Projects
- Provide support to Infrastructure Managers in maximising capacity through the use of the Decision Support Tool
- Provide Guidance Documents at the Final Conference to assist in implementation

Boyne Bridge Re-Furbishment





Thank You for you attention

**Michael Robson, Member of the
Executive Board
DESTinationRAIL**

www.destinationrail.eu



EUROPEAN COMMISSION
Innovation and Networks Executive Agency
Director

DESTination RAIL
Decision Support Tool for Rail Infrastructure
EU Project No. 636285

